

NX 300 | NX 300h | SELECT YOUR LEXUS





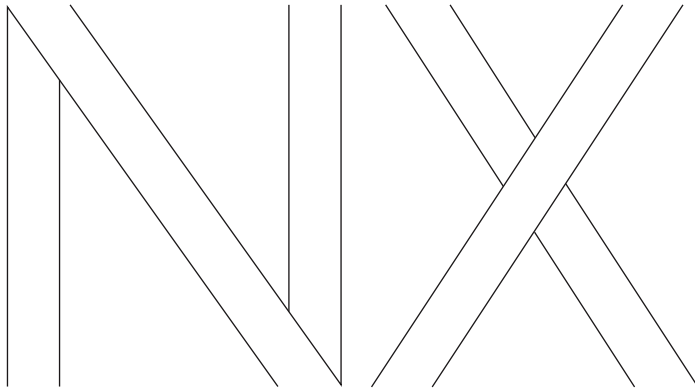
In this brochure we invite you to prepare for the excitement of choosing your new Lexus NX. Showcasing the latest in Lexus design, the new NX features a bold 'spindle grille' with stylish smoked chrome details and sporty LED headlights.

Whichever powertrain you select - the pioneering NX 300h Self-Charging Hybrid or dynamic NX 300 petrol turbo - you will find the NX a great pleasure to drive, with a chassis that delivers impressive urban agility.

The cockpit of the new NX is more sophisticated than ever. The large 10.3-inch multi-information display is easy to read, and intuitive to control via a large central Touch Pad device. Ultra-precise leather stitching and finely machined switchgear give the cabin an air of modern elegance and refinement.

All NX models can be equipped with the breakthrough Lexus Safety System +. This includes a Pre-Collision System with pedestrian detection; Lane Departure Alert with Sway Warning function to help you stay on course; Adaptive High-beam System for enhanced vision at night; Road Sign Assist that recognises traffic signs and Dynamic Radar Cruise Control.

For a more dynamic experience, you can choose the new NX F SPORT featuring an exclusive mesh grille, more responsive suspension, F SPORT interior and distinctive new wheels.



NX 300 | NX 300h



01. MODELS

Choose the dynamic NX 300 petrol turbo or the pioneering NX 300h Self-Charging Hybrid.

Pages 04-07



02. GRADES

What kind of NX best fits your lifestyle? Select from Eco, Comfort, Business, Executive, F SPORT and Luxury grades.

Pages 08-09



03. FEATURES

Discover the amazing level of standard and exciting optional features available for your new NX crossover.

Pages 10-12



04. TECHNOLOGY

Learn more about NX technologies such as Lexus Safety System +, S-Flow Climate Control and Lexus Premium Navigation.

Pages 13-16



05. ACCESSORIES

Explore the great range of accessories created by Lexus to enhance your enjoyment of the NX.

Page 17



06. F SPORT

For a more dynamic experience, discover the NX F SPORT.

Pages 18-19



07. COLOURS

Select your favourite exterior colour and specify a 'Takumi'-crafted interior that will make you feel at home every time you drive your new NX.

Pages 20-25



08. EQUIPMENT

The NX comes with a wide range of equipment as standard. Learn more about the extras you can add.

Pages 26-29



09. TECHNICAL DATA

Study all the key NX 300 and NX 300h technical data before ordering your NX crossover.

Pages 30-31

THE NX 300

Powered by a turbocharged direct injection 2.0-litre petrol engine, the dynamic NX 300 gives an immense boost to your crossover enjoyment, offering rapid acceleration, confident motorway performance and Lexus refinement. Short-stroke paddle shift controls on the steering column allow you to make quick shifts without removing your hands from the steering wheel.



Stunning Mercury Grey bodywork,
18" alloy wheels.

THE NX 300h

Equipped with Lexus Hybrid Drive - which seamlessly orchestrates power from a 2.5-litre petrol engine and electric motor(s) - the NX 300h is incredibly smooth and quiet, yet as easy to drive as a conventional luxury car. Delivering lively performance, it achieves amazing fuel economy for a crossover of this size.



Stunning Graphite Black bodywork,
18" alloy wheels.

01. 2.0-LITRE TURBO ENGINE

Featuring a breakthrough combination of water-cooled cylinder head, integrated exhaust manifold and twin scroll turbocharger, this 2.0-litre turbo engine delivers fast throttle response, exhilarating performance and high torque at low engine revs. For enhanced fuel economy, innovative valve timing allows the engine to switch between the Otto and Atkinson cycles. Tested in extremely harsh conditions - including weeks of mountain pass driving at 3,000 m in over 50° C of heat - this engine supplies a maximum output of 175 kW (238 DIN hp) with a maximum torque of 350 Nm.

02. D-4S

Depending on the driving situation, this advanced injection system distributes the fuel load between the higher-pressure direct injectors in the cylinder, and the lower pressure port injectors. Giving optimum combustion at all times, D-4S ensures enhanced fuel economy and excellent low-speed torque.

03. TURBOCHARGER

This highly efficient twin scroll turbocharger has been engineered to produce high torque right through the rev range. The shape of the turbine blades has been optimised, and the friction in the bearing mechanism reduced, creating a compact high-efficiency turbocharger with incredibly responsive performance.

04. 6-SPEED AUTOMATIC TRANSMISSION

The NX 300's 6-speed automatic transmission is designed to provide maximum power from the turbo engine. Thanks to its torque-demand control logic, the system optimises the required engine torque at any given moment, ensuring quick throttle response and high fuel efficiency.



01



02



04

01. 2.5-LITRE PETROL ENGINE

A highly efficient 155 DIN hp 'Atkinson Cycle' 4-cylinder petrol engine, with VVT-i valve control and optimised electronic fuel injection, forms the heart of the NX 300h's Self-Charging Hybrid powertrain. Start/Stop technology and exhaust heat recycling help reduce fuel consumption and emissions even further.

02. LEXUS HYBRID DRIVE

No larger than a conventional automatic transmission, Lexus Hybrid Drive's front electric motor, generator and power split mechanism are all housed in one highly compact hybrid transmission. Energy flows are managed by an advanced Power Control Unit that constantly optimises the allocation of power - electric, petrol or a combination of both.

03. HYBRID BATTERY

Featuring an innovative split design, and located under the rear seat so as not to encroach on the NX 300h's large luggage space, the hybrid battery provides high power output in relation to its weight. The NX 300h recharges its hybrid battery as required - using electricity generated when driving and braking - thus avoiding the need for any external charging.



01



02



03



ECO*

As you'd expect from Lexus, this package has a substantial level of standard equipment.

* Only available on hybrid FWD model.

17" 10-spoke alloy wheels
Bi-LED headlights
Fabric upholstery

8" fixed central display, Touch Pad operation
2-zone electronic climate control



COMFORT

The Comfort grade offers NX owners great looks and connectivity.

18" alloy wheels
Integrated roof rails
Analogue clock

8-speaker Pioneer® audio system
8" Lexus Media Display, Touch Pad operation



BUSINESS

Created for the driver whose car is a professional tool, this grade comes with purposeful looks and equipment to make driving more convenient.

18" alloy wheels
Parking assist sensors, front and rear
LED front fog lights

Tahara upholstery
Smart entry system
Cornering lights



EXECUTIVE

The NX Executive grade is distinguished by subtle exterior hallmarks while delivering a high level of comfort.

18" alloy wheels
Privacy glass

Leather upholstery
Front seats, 8-way electrically multi-adjustable



F SPORT*

For those in search of dynamic SUV looks, the F SPORT grade offers features such as an exclusive 'spindle grille', F SPORT wheels and sporty interior details.

* Only available on AWD models.

18" alloy wheels, F SPORT design
F SPORT front and rear bumper
Black F-mesh 'spindle grille'
Triple LED headlights
Lexus Safety System +
Front seats, F SPORT design

F SPORT leather upholstery
Drilled aluminium pedals
F SPORT steering wheel and gearshift lever
Active Sound Control
Front and rear performance dampers



LUXURY*

The ultimate NX for looks, refinement and comfort.

* Only available on AWD models.

18" alloy wheels, two-tone finish
Lexus Safety System +
Triple LED headlights

Leather upholstery
10-speaker Pioneer® audio system
Lexus Premium Navigation



01



02



03



04



05



06

01. 17" ALLOY WHEELS

Only available on the NX 300h – and fitted as standard on the Eco grade – these 10-spoke deep gloss wheels are equipped with 225/65 R17 tyres for low running resistance and excellent functionality.

02. 18" ALLOY WHEELS

Standard on Comfort, Business and Executive grades, this intricate u-shaped spoke design creates a sharp and radical profile, while 225/60 R18 tyres complete the bold sports look.

03. 18" ALLOY WHEELS

Exclusive to Luxury grade this wheel combines a bright machined finish with a dark metallic coating to create a dynamic impression.

04. POWER TAILGATE

A remote controlled tailgate ensures convenience, especially when your arms are full of shopping. With the key in your pocket or bag, simply place your foot under the rear bumper to open or close the tailgate.

05. SUNROOF

An electric, tilt and slide glass sunroof adds a feeling of freedom, spaciousness and light to the NX.

06. PANORAMIC ROOF

This large glass, factory-fitted panoramic roof provides extra headroom and lets more sunshine into the NX cabin. The panoramic roof is fitted with an electric sliding blind to shade you should the sun become too intense.

07. BI-LED / ECO DRL

Bi-LED headlights give excellent visibility. They are combined with energy saving Daytime Running Lights. An Automatic High Beam (AHB) function is available.

08. BI-LED / FULL DRL

Fitted standard on Comfort, Business and Executive grades, these higher grades benefit from full LED illumination of the L-shaped Daytime Running Lights.

09. TRIPLE LED 'L' BEAMS / FULL DRL

On F SPORT and Luxury grades, elegant ultra-small 3-beam LED units have been adopted. These are similar to those which were first used on the Lexus LC Coupé. These lights are combined with Daytime Running Lights which have thick-walled inner lenses to create a beautiful crystal glass impression even when not illuminated. Enhancing its sophisticated looks, sequential front and rear LED indicators make the new NX stand out even more in traffic.

10. LED REAR LIGHTS

The rear light cluster combines elegant LEDs arranged in the signature 'L' form, ensuring that at night your car is recognised as a Lexus at a glance. Thick-wall moulding technology gives a crystal appearance, and a strikingly bold presence when not illuminated.



07



08



09



10



01

01. ERGONOMIC DESIGN

Seat cushion shape and firmness have been optimised to reduce pressure on the sensitive ischial region. For extra comfort, long reach seat adjustments also accommodate larger physiques.

02. HEATED / VENTILATED SEATS

In combination with leather upholstery, the driver and front passenger can heat or ventilate their seats. This adds to the sense of luxury, especially in extreme weather conditions.

03. FLEXIBLE SPACE / POWER REAR SEATS

A practical 60:40 split folding rear seat comes standard on all NX models, which allows easy stowage of larger items like a racing bike or surfboard. With all rear seats folded down there is room to carry bulky objects.

You can also upgrade to a fully electric folding mechanism, which is operated via a number of conveniently located controls. And rear seat passengers can also partially recline their backrests for added comfort.

04. S-FLOW CLIMATE CONTROL

S-Flow intelligently controls the interior climate according to ambient conditions, ensuring excellent comfort and fuel economy.

05. LEATHER STEERING WHEEL

A beautifully crafted leather steering wheel features finger rests and a cross-section optimised to fit comfortably in your hands. Integrated switches control - where specified - audio, telephone, multi-information display, Dynamic Radar Cruise Control and Lane Departure Alert.

For added comfort in colder conditions, the steering wheel can be heated on higher grades. The steering wheel heater is activated by a switch and turns off automatically after a pre-set time.



02



03



04



05

06. LEXUS MEDIA DISPLAY

The NX is available with Lexus Media Display, which features an 8-inch screen and a Touch Pad to adjust audio, climate settings or view the energy monitor. Compatible smartphones can be 'mirror linked' to the display.



06

07. LEXUS PREMIUM NAVIGATION

With vivid 3D graphics and many mapping options, the 10.3-inch screen is operated by Touch Pad or voice commands. The system can even generate a QR code for your smartphone, to help you reach your final destination on foot.



07

08. COLOUR HEAD-UP DISPLAY

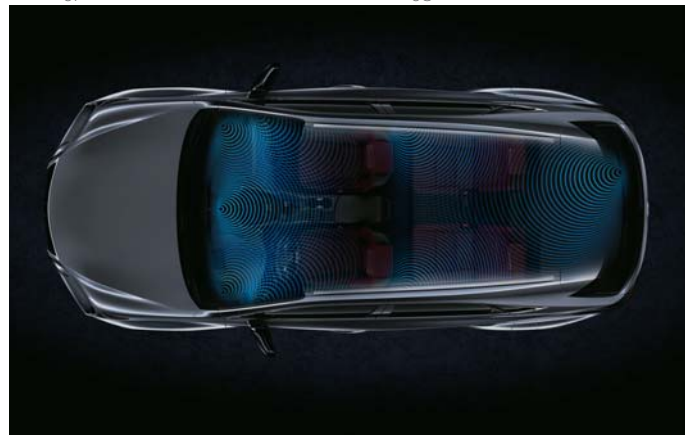
Vehicle data is projected in colour directly onto the windscreen. This extra-wide 6.2" Head-Up Display lets you check data like navigation commands or audio settings without taking your eyes off the road ahead.



08

09. 8 OR 10-SPEAKER PIONEER® AUDIO

An 8-speaker Pioneer® audio system is fitted as standard. This features an AM/FM RDS tuner, CD player and Bluetooth® connectivity. The 10-speaker upgrade has a DAB tuner and DVD player and offers greater fidelity with 16 cm speakers in the front doors.



09

10. MARK LEVINSON®

The 14-speaker Mark Levinson® Premium Surround system with GreenEdge™ technology is tailored to the acoustic properties of the NX. It delivers a peerless 7.1-channel digital home-theatre experience enhanced by Clari-Fi™ that rebuilds sound lost in MP3 digital compression.



10

11. WIRELESS CHARGER

Charge compatible smartphones or other electronic devices using the inductive wireless battery charger, conveniently positioned in the NX's centre console box.



11



01

01. 8 AIRBAGS

In addition to an immensely strong passenger safety cell, occupant protection is provided by eight airbags. The driver and front passenger are protected by 2-stage head airbags, as well as knee and side airbags. Curtain shield airbags run the full length of both cabin sides. All seatbelts are also specified with pre-tensioners.

02. TYRE PRESSURE WARNING SYSTEM

Receiving data from a sensor installed in each tyre, the multi-information display tracks tyre pressure data and warns accordingly should pressure drop in one or more tyres.



02



03

03. WHIPLASH INJURY LESSENING SEATS

The front seats are designed to minimise whiplash inducing neck motion in a rear impact. Reinforced seat frames allow the torso to sink into the seatback, while the placement of the headrest supports the head more effectively.

04. PARKING ASSIST MONITOR

To make parking even easier, sensors in the rear bumper link with an in-car beeper to warn of obstacles in your way. The beeper can be turned off when not required. Engage reverse and the view behind the NX is relayed to the 10.3-inch display, complete with on-screen guides to assist parking.



04



05

05. PANORAMIC VIEW MONITOR

For easier driving in confined spaces, four cameras provide a near-360° view around the entire vehicle. A Lexus first, Panoramic View Monitor also creates a virtual 3D view of your NX, with on-screen guides to assist close-quarter manoeuvring in the city.

06. BLIND SPOT MONITOR & REAR CROSS TRAFFIC ALERT

Radar devices mounted in the rear bumper detect vehicles in adjacent lanes that are not visible in the door mirrors. If the driver is indicating to change lane and a vehicle enters the blind spot, a warning signal appears in the relevant door mirror(s).

The Rear Cross Traffic Alert function uses Blind Spot Monitor radar to detect vehicles approaching the area behind the vehicle in a car park. When necessary, it alerts you with a buzzer and a visual display in the door mirrors.



06

07. LEXUS SAFETY SYSTEM +

Breakthrough Lexus Safety System + is available on the new NX and includes a Pre-Collision System with pedestrian detection; Lane Departure Alert to help you stay on course; Automatic High Beam for enhanced vision at night; Road Sign Assist that recognises traffic signs and Dynamic Radar Cruise Control, which regulates your speed to that of the vehicle in front.



08. PRE-COLLISION SYSTEM & PEDESTRIAN DETECTION

Millimetre-wave radar and an on-board computer calculate collision risk ahead. If the risk is high, Pre-Collision System alerts the driver and brake pressure is increased. When a collision is deemed unavoidable, the brakes will be applied automatically as necessary and the front seatbelts tightened. Furthermore, if an object (such as a pedestrian) is detected in front, automatic braking will activate at speeds between about 10 and 80 km/h to help avoid a collision.



09. DYNAMIC RADAR CRUISE CONTROL

For a more relaxing drive, Dynamic Radar Cruise Control maintains a set distance between the NX and the vehicle ahead, even if that vehicle varies its speed.



10. LANE DEPARTURE ALERT & AUTOMATIC HIGH BEAM

Lane Departure Alert (LDA) uses a camera in the front windscreen to monitor your position in lane. If you start drifting out of lane, LDA will activate a warning buzzer and give brief corrective steering input.

At night, Automatic High Beam uses the same camera as LDA to detect oncoming vehicles and automatically dip the high beam headlights. This reduces the chance of accidentally dazzling other drivers and lets you concentrate on the road ahead.



11. ADAPTIVE HIGH-BEAM SYSTEM

An adjustable LED Adaptive High-beam System also prevents the NX from dazzling other road users. A total of 11 independent LED chips in the headlight are enabled/disabled for precise control of the illuminated and non-illuminated areas.

12. ROAD SIGN ASSIST

The Road Sign Assist (RSA) system on the new NX recognises traffic signs using the windscreen mounted camera, and provides information to the driver in the multi-information display. RSA can detect signs that are compliant with the Vienna Convention (including electroluminescent and flashing signs).



07

08

09

10

11

14



01

01. EXTREMELY STRONG CHASSIS, ADAPTIVE VARIABLE SUSPENSION

With its sophisticated chassis, suspension and steering, the NX is incredibly smooth and refined to drive. Advanced laser screw welding and adhesive bonding techniques also make it extremely rigid. This has produced a crossover of great strength, which rewards drivers with superior handling characteristics. Equipped with compact MacPherson strut front suspension and sophisticated double wishbone rear suspension, the NX gives outstanding road holding, sedan-like cornering characteristics and superb straight-line stability. For a more engaging drive, optional Adaptive Variable Suspension intelligently controls the damping force on all four wheels. This not only improves ride comfort, but also increases handling stability.



02

02. ADVANCED AERODYNAMICS

The NX has excellent aerodynamics, thanks to a near-flat underbody and large rear spoiler. To reduce the overall drag coefficient, Lexus engineers also redesigned the door mirrors. These measures not only enhance stability and handling, they also improve fuel efficiency and reduce wind noise.

03. DRIVE MODE SELECT

Located on the centre console, next to the gearshift, Drive Mode Select allows drivers to choose between Eco, Normal / Custom, Sport S / Sport S+ modes, for maximising the car's efficiency, dynamism or refinement.



03



04

04. E-FOUR

On NX 300h All-Wheel Drive models, E-FOUR delivers seamless performance and confident traction over rougher terrain. The innovative E-FOUR drivetrain features the addition of a 68 DIN hp electric motor mounted on the rear axle, which supplies instant torque on demand.

05. HILL-START ASSIST CONTROL

Hill-start Assist Control maintains brake pressure to help prevent the NX from moving backwards when starting off on a slope. Hill-start Assist Control also minimises wheel-spin on slippery inclines.



05

01. TEXTILE FLOOR MATS

Luxurious black textile mats made of acuvellour to improve the sound absorbing qualities of your car's carpets. The driver's mat has a safety fixing to prevent it from slipping.



01



02

02. FRONT SKIRT

Designed to enhance your car's look of power and individuality. The Lexus front skirt integrates with, and complements, the NX's front bumper.

03. REAR SKIRT

With its wrap-around styling, the Lexus rear skirt extends the depth of the NX's rear bumper to establish a dynamic, sporty appearance. (The rear skirt accessory for the NX 300h will be available in February 2018.)



03



04

04. DETACHABLE TOWING HITCH*

Integrates with the NX's chassis to evenly distribute the pulling and braking forces of towing, thus minimising the risk of stress damage to your crossover. It has a 1500 kg towing capacity and the hitch removes when not required. The purpose-designed wiring kit includes safety buffers to shield your car's electrics against faults in the trailer's system.

*Not available on NX 300h FWD models.

05. BOOT LINER

Made of tough, flexible plastic with a non-slip surface pattern and a raised lip around the edges to comprehensively protect the luggage space carpet against mud, dirt, sand and liquids.



05



06

06. PORTABLE DVD PLAYER

With its 7" screen, the portable DVD player is perfect for entertaining passengers on long journeys. It slots into a Lexus seat-back docking device and offers comprehensive multimedia compatibility including USB, SD card and smartphone AV input. You can even use it at home with a suitable power adapter. An additional docking device, DVD unit and wireless headphones are available as extras.

07. 17" WINTER ALLOY WHEELS

Lexus winter alloy wheels are purpose designed to equip your NX for poor road conditions and low temperature driving while maintaining a prestige appearance.



07



08

08. 18" ALLOY WHEELS

The black mirror chrome finish and high performance 10-spoke design create an unmistakable look of urban sophistication.

09. 18" SILVER MACHINED FACE ALLOY WHEELS (5 DOUBLE-SPOKE)

A sports inspired multi-spoke design highlighted by its reflective silver finish and machined face on alternating spokes.



09



10

10. 18" BLACK MACHINED FACE ALLOY WHEELS (5 DOUBLE-SPOKE)

Sporty multi-spoke design in a gloss black finish with individual spokes machined to expose the underlying alloy.

F SPORT



01



01

01. F SPORT DESIGN

A bolder 'spindle grille' with an exclusive mesh pattern accentuates the NX F SPORT's dynamic looks. Further exclusive details like an F SPORT badge (incorporating the curves of the Fuji Speedway), black door mirrors, distinctive 18" F SPORT alloy wheels, rear bumper and spoiler all express the car's strong character.



02

02. 18" F SPORT ALLOYS

Exclusive to F SPORT, with a dark premium metallic finish, these extremely distinctive 5-twin-spoke alloy wheels underline the vehicle's dynamic character.



03

03. 18" F SPORT ALLOYS

For an exciting new F SPORT look, these alloy wheels combine an exclusive colour - Black with machined finish - and a highly textured appearance.

04. F SPORT INTERIOR

The F SPORT interior is available in black leather and exclusive new leather upholstery colours Flare Red and Mustard Yellow, together with unique ornamentation and stitching. Exclusive new F SPORT seats feature 'integrated foaming' technology for added lateral support while cornering. Aluminium inlays perfectly complement the beautifully crafted F SPORT steering wheel, inspired by that of our iconic LFA supercar. Finished in perforated leather, the F SPORT gearshift design matches the steering wheel to create an exciting sports look. Drilled aluminium pedals add further excitement to the interior.



04

05. G-SENSOR

For a more engaging drive, a G-Sensor displays the NX F SPORT's lateral and longitudinal G-forces in the multi-information display. The screen also displays the steering angle, throttle position, and hydraulic brake pressure.

06. BOOST METER

The NX 300 F SPORT features a boost meter that tracks the dynamic performance of the engine's turbo. The display also shows the temperature and oil pressure data.



05



06

DEVELOPING A NEW LEXUS PAINT COLOUR IS BOTH COMPLEX AND TIME CONSUMING



Lexus designers never use off-the-shelf colours, preferring instead to develop their own, from scratch, a process that can take up to two years. The Lexus paint palette totals some 30 different colours including metallic finishes like Satin Silver and Sonic Titanium.

There are no shortcuts to creating a new Lexus colour: A designer's decision comes only after going through hundreds of samples. "When developing a new colour I see so many shades of paint that I sometimes can't see straight at the end of the day," says Megumi Suzuki, one of our most experienced colour designers. To do her job, it takes a grasp of chromogenics and a keen eye.

"Every time I meet someone or walk into a shop or go to someone's house, I check out colours and materials," she says. "There are a lot of people like me in our division."

Even after a colour has been decided upon, there's plenty to do. At various stages during development, Suzuki had to enlist a small army of experts: Lab technicians who mix the paint, clay sculptors, engineers and the assembly-line paint shop crew who would give each car a flawless, uniform coat. Every few weeks Kansai Paint (a Lexus paint supplier) produces a new batch, and Lexus designers give the samples a thorough look-over, bending the test panels to mimic the contours of a car. All are scrutinised indoors and outdoors, under floodlights, in sunlight, shade and overcast conditions, and at different times of the day and months of the year.

Selecting the final colour is not easy. A colour that is dazzling on a summer morning can appear sickly in the shade or under showroom lights. Designers also have to contend with the vagaries of their own preferences. "The odd thing about colour is that your perception of it can change depending on the season, how you feel that day and the trends you're seeing," says Suzuki.

F WHITE | 083¹



SONIC WHITE | 085



SATIN SILVER | 1J4



SONIC TITANIUM | 1J7



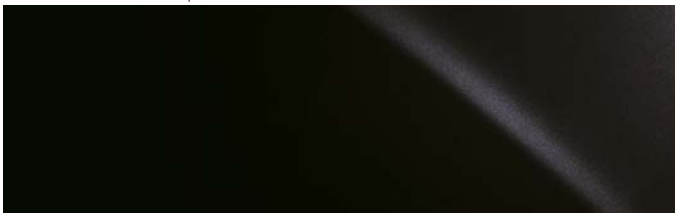
MERCURY GREY | 1H9



BLACK | 212³



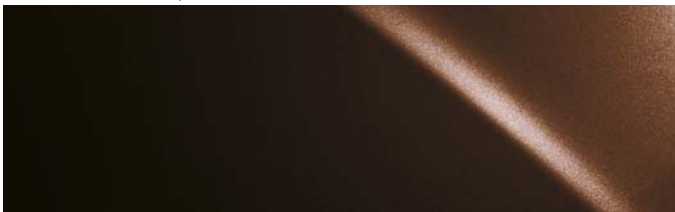
GRAPHITE BLACK | 223



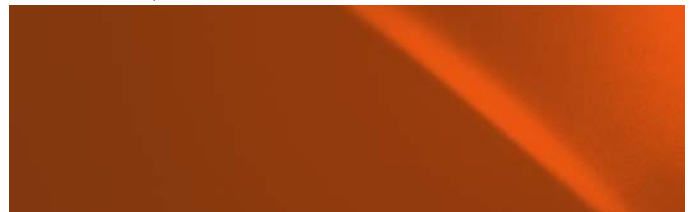
MORELLO RED | 3R1



COPPER BROWN | 4X2²



SOLAR FLARE | 4W7¹



SKY BLUE | 8X9²



SAPPHIRE BLUE | 8X1¹



¹ Exclusive to F SPORT.

² Not available on F SPORT.

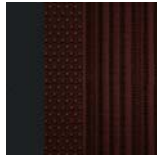
³ Solid colour

Please note: due to printing variances, actual paintwork colours may vary slightly from those illustrated.

FABRIC¹



Black



Dark Rose

TAHARA TRIM²



Black



Rich Cream



White Ochre



Dark Rose

LEATHER³



Black



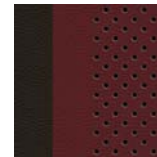
Rich Cream



White Ochre

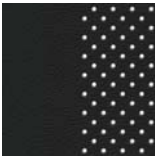


Ochre



Dark Rose

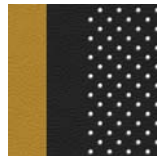
F SPORT LEATHER⁴



Black

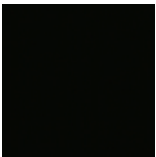


Flare Red

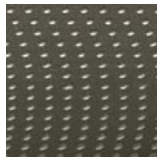


Mustard Yellow

INLAYS⁵



Piano Black



Silver



Shimamoku



Bamboo

F SPORT INLAYS⁶



Carbon



Naguri-Style
Aluminium

¹ Fabric upholstery is standard on Eco and Comfort grades. The Eco grade is supplied in Black.

² Tahara trim is standard on Business grade. It can also be specified as part of a cost option pack on Comfort. White Ochre can be ordered in combination with either Black or matching White Ochre instrument panel and door panels.

³ Leather is standard on Executive and Luxury grades. White Ochre and Rich Cream can be ordered in combination with either Black or matching instrument panel and door panels.

⁴ F SPORT leather in a unique design and exclusive colours is standard on F SPORT.

⁵ Piano Black inlays are standard on Eco and Comfort grades. Silver inlays are standard on Business and Executive grades. Silver or Shimamoku can be specified as an option or part of a pack on Comfort. Shimamoku or bamboo inlays are standard on Luxury.

⁶ Carbon inlays are standard on F SPORT, while Naguri-Style Aluminium is available as an option.

The images on the following 3 pages illustrate a selection of the interior combinations available. Your local Lexus Authorised Retailer will be pleased to provide you with any further help.



01



02



03

- 01 Black fabric with Piano Black inlays (Comfort)
- 02 White Ochre Tahara trim with Silver inlays (Business)
- 03 Dark Rose Tahara trim with Silver inlays (Business)



04



05



06

- 04 Black leather with Shimamoku inlays (Luxury)
- 05 Rich Cream leather with Shimamoku inlays (Luxury)
- 06 Ochre leather with Bamboo inlays (Luxury)



07



08



09

- 07 Black F SPORT leather with Carbon inlays (F SPORT)
- 08 Flare Red F SPORT leather with Naguri-Style Aluminium inlays (F SPORT)
- 09 Mustard Yellow F SPORT leather with Naguri-Style Aluminium inlays (F SPORT)

EQUIPMENT | GRADES

EXTERIOR	ECO	COMFORT	BUSINESS	EXECUTIVE	F SPORT	LUXURY
Auto-levelling headlights	■	■	■	■	■	■
Cornering lights ¹	-	■/○	■	■	■	■
Daytime running lights, LED	■	■	■	■	■	■
Door mirrors, electrically adjustable and folding, heated	■	■	■	■	-	-
Door mirrors, electrically adjustable with memory, auto-folding, electro chromatic (auto-dimming), heated	-	-	-	-	■	■
Door mirrors, integral turn signal indicators	■	■	■	■	■	■
F SPORT logos, front fenders	-	-	-	-	■	-
F-mesh 'spindle grille'	-	-	-	-	■	-
Front bumper, F SPORT design	-	-	-	-	■	-
Front fog lights ¹	-	■/○	■	■	■	■
Headlight cleaners	○	○	○	○	■	■
Headlights, bi-LED	■	■	■	■	-	-
Headlights, triple LED	-	-	-	-	■	■
Integral roof rails	-	■	■	■	■	■
Intelligent Parking Sensors (IPS), front and rear	-	-	-	-	○	○
Lexus 'spindle grille'	■	■	■	■	-	■
Parking assist sensors, front and rear	-	-	■	■	■	■
Privacy glass	-	-	○	■	■	■
Rain sensing windscreen wipers	□	■	■	■	■	■
Rear bumper, F SPORT design	-	-	-	-	■	-
Rear combination lights, LED	■	■	■	■	■	■
Sequential indicators	-	■	■	■	■	■
Tailgate, electrically operated	-	-	○	○	■	■
Tailgate, electrically operated with kick-open function	-	-	-	○	○	○

WHEELS

17" alloy wheels, 10-spoke design, 225/65 R17 tyres ²	■	○	-/○	-	-	-
18" alloy wheels, 5-twin-spoke design, 225/60 R18 tyres	-	■	■	■	-	-
18" alloy wheels, F SPORT design, 5-twin-spoke, 235/55 R18 tyres	-	-	-	-	■	-
18" alloy wheels, F SPORT design, two-tone finish, 225/60 R18 tyres	-	-	-	-	○	-
18" alloy wheels, two-tone finish, 225/60 R18 tyres	-	-	-	-	-	■

ACTIVE SAFETY AND DRIVING DYNAMICS

Active brake lights	■	■	■	■	■	■
Adaptive High-beam System (AHS)	-	-	-	-	■	■
Adaptive Variable Suspension (AVS)	-	-	-	-	□	□
Anti-lock Braking System (ABS)	■	■	■	■	■	■
Automatic High Beam (AHB)	□	□	□	□	-	-
Blind Spot Monitor (BSM) with Rear Cross Traffic Alert (RCTA)	-	-	-	-	■	■
Cruise control	■	■	■	■	-	-
Drive Mode Select (Eco - Normal - Sport)	■	■	■	■	■	■
Drive Mode Select (Eco - Normal / Custom - Sport S / Sport S+)	-	-	-	-	□	□
Dynamic Radar Cruise Control (DRCC), all-speed	□	□	□	□	■	■
Electronic Parking Brake (EPB)	■	■	■	■	■	■
EV (Electric Vehicle) mode (NX 300h)	■	■	■	■	■	■
Hill-start Assist Control (HAC)	■	■	■	■	■	■
Lane Departure Alert (LDA) with Sway Warning function	□	□	□	□	■	■
Pre-Collision System (PCS)	□	□	□	□	■	■
Performance dampers, front and rear	-	-	-	-	■	-
Road Sign Assist (RSA)	□	□	□	□	■	■
Sports suspension	-	-	-	-	■	-
Traction Control (TRC)	■	■	■	■	■	■
Vehicle Stability Control (VSC)	■	■	■	■	■	■

EQUIPMENT | GRADES

PASSIVE SAFETY	ECO	COMFORT	BUSINESS	EXECUTIVE	F SPORT	LUXURY
Airbag cut-off switch, front passenger	■	■	■	■	■	■
Airbags, driver and front passenger; head, side and knee / full-length curtain shield	■	■	■	■	■	■
ISOFIX attachment, outer rear seats	■	■	■	■	■	■
Seatbelt pre-tensioners, front seats	■	■	■	■	■	■
Seatbelt pre-tensioners, rear seats	■	■	■	■	■	■
SECURITY						
Anti-theft system – horn	■	■	■	■	■	■
Anti-theft system – siren / intrusion sensor	○	○	○	○	○	○
Anti-theft system – siren / intrusion sensor / inclination sensor / glass breakage sensor	○	○	○	○	○	○
Auto door locking	■	■	■	■	■	■
Double door lock	■	■	■	■	■	■
AUDIO, COMMUNICATION & INFORMATION						
8" Lexus Media Display	□	■	■	■	■	–
10.3" multimedia display	–	□	□	□	□	■
8-speaker Pioneer® audio system	□	■	■	■	■	–
10-speaker Pioneer® audio system	–	□	□	□	□	■
14-speaker Mark Levinson® Premium Surround system	–	–	–	–	□	□
2 USB ports and AUX socket	□	■	■	■	■	■
Active Sound Control (ASC) ³	–	–	–	–	○/■	–
Analogue clock with GPS function	□	■	■	■	■	■
Antenna, shark fin design	■	■	■	■	■	■
Bluetooth® mobile phone and audio connectivity	□	■	■	■	■	■
Head-Up Display (HUD)	–	–	–	–	○	○
Lexus Premium Navigation	–	□	□	□	□	■
Panoramic View Monitor	–	–	–	–	□	□
Parking assist monitor with on-screen guides	–	○	○	○	■	■
Steering wheel mounted controls – audio / display / phone / voice	■	■	■	■	■	■
Steering wheel mounted controls – audio / display / phone / voice / DRCC / LDA	□	□	□	□	■	■
Touch Pad operation for central display	■	■	■	■	■	■
Tuner with DAB technology ⁴	□	○	○	○	○	■
Wireless charger	–	○	○	○	○	○

- Available as standard.
- Available as an option.
- Available as part of a pack.
- Not available.

¹ For the NX Comfort grade, cornering lights and front fog lights are standard on NX 300 and available as an option on NX 300h.

² For the NX Business grade, 17" alloy wheels are only available as an option on NX 300h.

³ For the NX F SPORT grade, Active Sound Control is standard on NX 300h and available as an option on NX 300.

⁴ For the NX Eco grade, this option can only be ordered in combination with the Lexus Media Display pack.

EQUIPMENT | GRADES

INTERIOR COMFORT & CONVENIENCE	ECO	COMFORT	BUSINESS	EXECUTIVE	F SPORT	LUXURY
3-spoke, leather trimmed steering wheel with paddle shift controls	■	■	■	■	-	■
3-spoke, perforated leather trimmed steering wheel with paddle shift controls	-	-	-	-	■	-
Card key	-	-	-	-	-	■
Drilled aluminium pedals	-	-	-	-	■	-
Electrically operated windows, front and rear	■	■	■	■	■	■
Electronic climate control, 2-zone with S-Flow technology	■	■	■	■	■	■
Front centre armrest with storage box and 2 cup holders	■	■	■	■	■	■
Front seats, 6-way manually adjustable	■	■	■	-	-	-
Front seats, 8-way electrically adjustable	-	-	-	■	■	■
Front seat lumbar support, electrically adjustable, 2-way (driver)	-	-	-	-	■	■
Front seats, F SPORT design	-	-	-	-	■	-
Glass sunroof, electric tilt/slide	-	○	○	○	○	○
Heated and ventilated front seats	-	-	-	-	□	■
Heated front seats	-	□	■	■	■	■
Heated rear seats	-	-	-	-	□	■
Heated steering wheel	-	○	○	○	○	○
Illuminated entry system	■	■	■	■	■	■
Inlays, Bamboo	-	-	-	-	-	■
Inlays, Carbon	-	-	-	-	■	-
Inlays, Naguri-Style Aluminium	-	-	-	-	○	-
Inlays, Piano Black	■	■	-	-	-	-
Inlays, Shimamoku	-	-	-	-	-	■
Inlays, Silver	-	○/□	■	■	-	-
Leather trimmed gearshift knob	■	■	■	■	-	■
Luggage holding belt	■	■	■	■	■	■
Memory function for driver's seat	-	-	-	-	□	■
Panoramic sunroof ¹	-	-	○	○	○	○
Perforated leather trimmed gearshift knob	-	-	-	-	■	-
Rear centre armrest with storage space and 2 cup holders	■	■	■	■	■	■
Rear seat bench, 60:40 split-folding	■	■	■	■	■	■
Rear seat bench, 60:40 split-folding, electric operation	-	-	-	-	-	○
Rear-view mirror, manual dimming adjustment	■	-	-	-	-	-
Rear-view mirror, electro chromatic (auto-dimming)	○	■	■	■	■	■
Scuff plates, standard design	■	■	■	-	-	-
Scuff plates, F SPORT design	-	-	-	-	■	-
Scuff plates, upgraded design	-	-	-	■	-	■
Smart entry system	-	○	■	■	■	■
Steering column, manually multi-adjustable	■	■	■	■	-	-
Steering column, electrically multi-adjustable	-	-	-	-	■	■
Tyre repair kit	■	■	■	■	■	■
Temporary spare wheel	○	○	○	○	○	○
Upholstery, Fabric	■	■	-	-	-	-
Upholstery, Tahara trim	-	□	■	-	-	-
Upholstery, F SPORT leather	-	-	-	-	■	-
Upholstery, leather	-	-	-	■	-	■
Wireless door lock	■	■	■	■	■	■

- Available as standard.
- Available as an option.
- Available as part of a pack.
- Not available.

¹ If panoramic sunroof is specified, the otherwise standard fitment roof rails are not supplied due to technical reasons.

EQUIPMENT | PACKS

PACKS	ECO	COMFORT	BUSINESS	EXECUTIVE	F SPORT	LUXURY
Sports driving	-	-	-	-	□	□
Adaptive Variable Suspension (AVS)	-	-	-	-	□	□
Drive Mode Select (Eco - Normal / Custom - Sport S / Sport S+)	-	-	-	-	□	□
Lexus Safety System +	□	□	□	□	■	■
Pre-Collision System (PCS)	□	□	□	□	■	■
Lane Departure Alert (LDA) with Sway Warning function	□	□	□	□	■	■
Road Sign Assist (RSA)	□	□	□	□	■	■
Dynamic Radar Cruise Control (DRCC), all-speed	□	□	□	□	■	■
Automatic High Beam (AHB) / Adaptive High-beam System (AHS)	□/-	□/-	□/-	□/-	-/■	-/■
Steering wheel mounted controls - audio / display / phone / voice / DRCC / LDA	□	□	□	□	■	■
Lexus Media Display	□	■	■	■	■	-
8" Lexus Media Display	□	■	■	■	■	-
8-speaker Pioneer® audio system	□	■	■	■	■	-
Analogue clock with GPS function	□	■	■	■	■	■
Bluetooth® mobile phone and audio connectivity	□	■	■	■	■	■
2 USB ports and AUX socket	□	■	■	■	■	■
Rain sensing windscreen wipers	□	■	■	■	■	■
Lexus Media Display with DAB tuner	□	-	-	-	-	-
Contents of the Lexus Media Display pack with	□	■	■	■	■	-
Tuner with DAB technology	□	○/□	○/□	○/□	○/□	■
Lexus Premium Navigation	-	□	□	□	□	■
Lexus Premium Navigation	-	□	□	□	□	■
10.3" multimedia display	-	□	□	□	□	■
10-speaker Pioneer® audio system	-	□	□	□	□	■
Tuner with DAB technology	□	○/□	○/□	○/□	○/□	■
Lexus Premium Navigation with Mark Levinson® upgrade	-	-	-	-	□	□
Contents of Lexus Premium Navigation pack with	-	□	□	□	□	■
14-speaker Mark Levinson® Premium Surround	-	-	-	-	□	□
Lexus Premium Navigation with Mark Levinson® upgrade and Panoramic View Monitor	-	-	-	-	□	□
Contents of Lexus Premium Navigation pack with	-	□	□	□	□	■
14-speaker Mark Levinson® Premium Surround	-	-	-	-	□	□
Panoramic View Monitor	-	-	-	-	□	□
Tahara trim plus	-	□	-	-	-	-
Tahara upholstery	-	□	■	-	-	-
Heated front seats	-	□	■	■	■	■
Inlays, Silver	-	□	■	■	-	-
F SPORT leather plus	-	-	-	-	□	■
Memory function for driver's seat	-	-	-	-	□	■
Heated and ventilated front seats	-	-	-	-	□	■
Heated rear seats	-	-	-	-	□	■

- Standard on specific grade(s).
- Available as an option.
- Available as (part of) a pack.
- Not available.

TECHNICAL DATA

ENGINE	NX 300 FWD (AWD)	NX 300h FWD (AWD)
Capacity (cm ³)	1998	2494
Cylinders / Valves	L4/16	L4/16
Maximum power (DIN hp @ rpm)	238 @ 4800 - 5600	155 @ 5700
Maximum power (kW @ rpm)	175 @ 4800 - 5600	114 @ 5700
Maximum torque (Nm @ rpm)	350 @ 1650 - 4000	210 @ 4200 - 4400
ELECTRIC MOTOR(S)		
Type	–	AC synchronous, permanent magnet
Maximum power (DIN hp) front / rear	–	143 / - (143 / 68)
Maximum power (kW) front / rear	–	105 / - (105 / 50)
Maximum torque (Nm) front / rear	–	270 / - (270 / 139)
TRANSMISSION		
Type	6-speed Automatic	Electronic-Continuously Variable Transmission
Drive	Front-Wheel Drive (All-Wheel Drive)	Front-Wheel Drive (All-Wheel Drive)
TOTAL SYSTEM OUTPUT		
Total power (DIN hp)	238	197
Total power (kW)	175	145
PERFORMANCE		
Maximum speed (km/h)	200	180
Acceleration 0-100 km/h (s)	7.3 (7.1)	9.2
FUEL CONSUMPTION* (l/100km)		
Urban	10.3 / 10.5 (10.4 / 10.7 / 9.7)	5.0 / 5.1 / 5.3 (5.1 / 5.3 / 5.4)
Extra urban	6.2 / 6.4 (6.5 / 6.6 / 6.9)	5.0 / 5.0 / 5.2 (5.0 / 5.1 / 5.2)
Combined	7.7 / 7.9 (7.9 / 8.1 / 7.9)	5.0 / 5.1 / 5.2 (5.1 / 5.2 / 5.3)
CO₂ EMISSIONS* (g/km)		
Urban	237 / 243 (241 / 245 / 225)	117 / 117 / 123 (118 / 122 / 125)
Extra urban	144 / 149 (150 / 154 / 160)	115 / 116 / 120 (116 / 119 / 121)
Combined	178 / 183 (183 / 187 / 184)	116 / 117 / 121 (117 / 121 / 123)
WEIGHTS** (kg)		
Gross vehicle	2295 (2350)	2245 / 2230 (2395)
Kerb weight (min. - max.)	1680 - 1805 (1735 - 1860)	1715 - 1755 / 1720 - 1840 (1785 - 1905)
CAPACITIES***		
Luggage volume – rear seats upright, loaded to luggage cover (l)	500 / 580	475 / 555
Luggage volume – rear seats folded down, loaded to the roof (l)	1545 / 1625	1520 / 1600
Fuel tank capacity (l)	60	56
Towing capacity max. braked (kg)	1500	0 / 650 (1500)
Towing capacity max. unbraked (kg)	750	0 / 650 (750)

* Figures differ by grade and alloy wheel size. For the NX 300 FWD and AWD, 1st figure is for Comfort grade with optional 17" alloy wheels. 2nd figure is for Comfort, Business and Executive grades specified as standard with 18" alloy wheels. For the NX 300 AWD, 2nd figure also includes the Luxury grade. 3rd figure is for the F SPORT grade with 18" alloy wheels. For the NX 300h FWD, 1st figure is for the Eco grade specified with 17" alloy wheels. 2nd figure is for the Comfort and Business grades with optional 17" alloy wheels. 3rd figure is for Comfort, Business, Executive and Luxury grades specified as standard with 18" alloy wheels. For the NX 300h AWD, 1st figure is for Comfort and Business grades with optional 17" alloy wheels. 2nd figure is for Comfort, Business, Executive and Luxury grades specified as standard with 18" alloy wheels. 3rd figure is for the F SPORT grade with 18" alloy wheels.

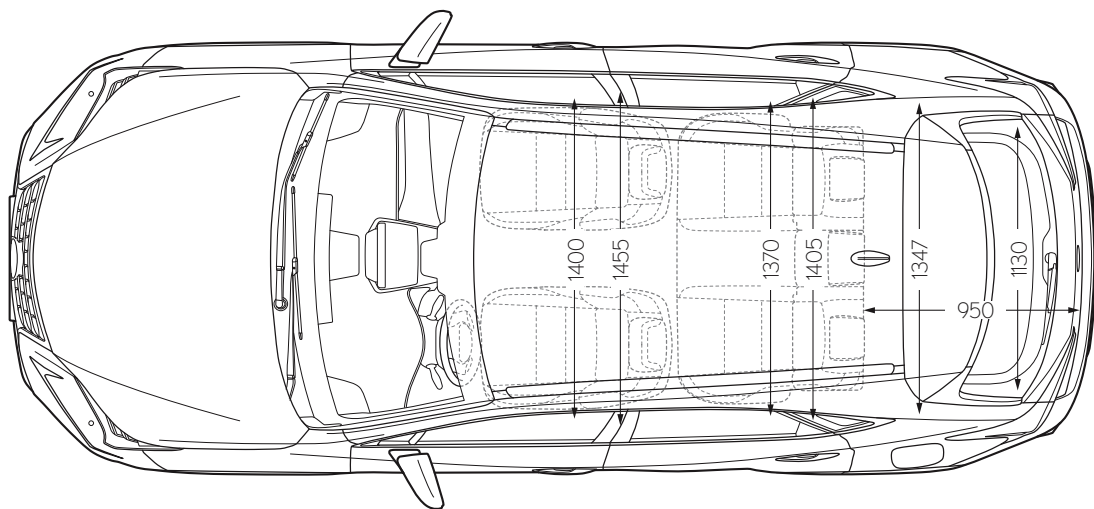
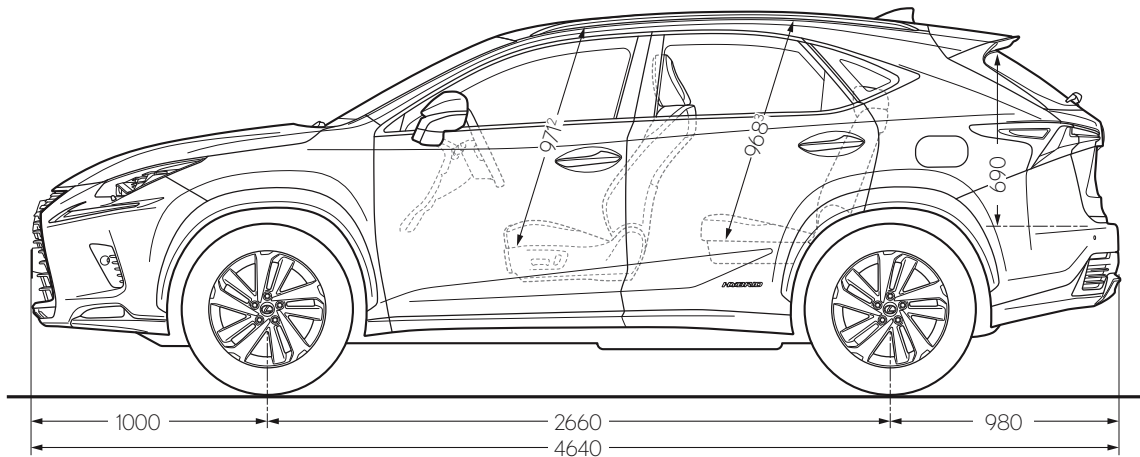
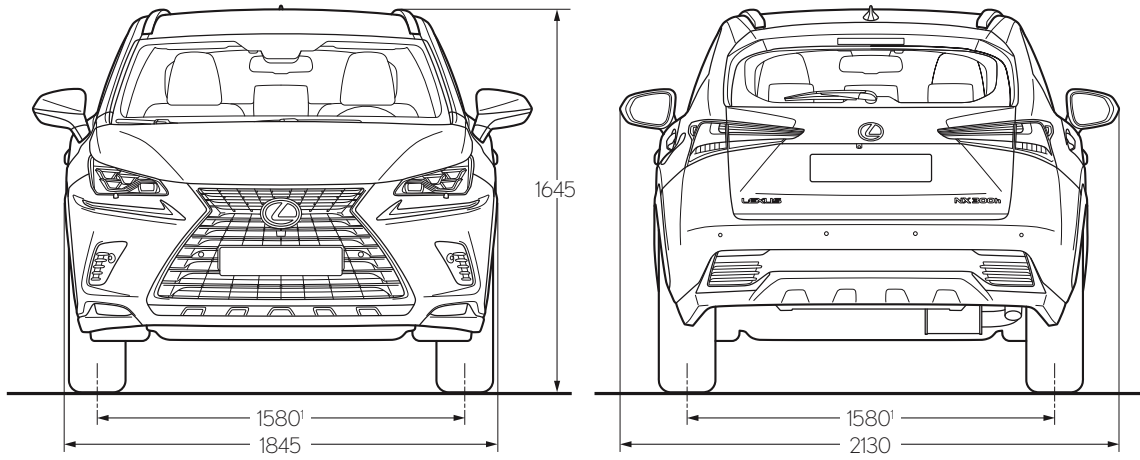
The fuel consumption and CO₂ values are measured in a controlled environment, in accordance with the requirements of Directive 80/1268/EEC incl. its amendments, on a vehicle with European Standard equipment. For further information, or if you are interested in purchasing a vehicle with European Standard equipment, please contact your Lexus Authorised Importer. The fuel consumption and CO₂ values of your vehicle may vary from those measured. Driving behaviour as well as other factors (such as road conditions, traffic, vehicle condition, tyre pressure, installed equipment, load, number of passengers, etc) play a role in determining a car's fuel consumption and CO₂ emissions.

** For the NX 300h FWD, 1st figure is for the Eco grade. 2nd figure is for all other grades.

*** Luggage volume is calculated as per the VDA method. 1st figure is for the vehicle specified with a temporary spare wheel. 2nd figure is for the vehicle specified with a tyre repair kit. All figures quoted include the under floor storage area in the luggage compartment. For the NX 300h FWD, 1st towing capacity figure is for the Eco grade specified without towing capacity to achieve a lower CO₂ and fuel consumption. 2nd figure is for all other grades.

Please note: further Technical Data, including any updates, can be found at www.lexus.eu

TECHNICAL DATA



¹When specified with 235/55 R18 tyres, both the front and rear track figures are 1570.

²When specified with a sunroof the front headroom figure is 950 and when specified with a panoramic roof it is 976.

³When specified with a sunroof the rear headroom figure is 967 and when specified with a panoramic roof it is 938.

Please note: the dimensions illustrated / noted are measured in millimetres.

More about the new NX:
lexus.eu/NX
youtube.com/LexusEurope
twitter.com/Lexus_EU
instagram.com/LexusEurope

©2018 Lexus Europe* reserves the right to alter any details of specifications and equipment without notice. Details of specifications and equipment are also subject to change to suit local conditions and requirements. Please enquire at your local Lexus Authorised Retailer of any such changes that might be required for your area.

Note: Vehicles pictured and specifications detailed in this brochure may vary from models and equipment available in your area. Vehicle body colour might differ slightly from the printed photos in this brochure.

For further information please visit our website: www.lexus.eu

Taking care of the environment is a priority for Lexus. We take many measures to ensure that during the lifecycles of our vehicles - from design, production, distribution, sales and service to end-of-life - their environmental impact is minimised. Your retailer will be happy to provide more information on end-of-life vehicle requirements.

* Lexus Europe is a division of Toyota Motor Europe NV/SA.

Printed in Europe, February 2018

